

# Franz Kline (1910-1962)

K03

*Circus Scene*

1938 c.

Watercolor with pencil, underdrawing on paper

38 x 48 cm

15 1/5 x 18 4/5 in.

Washington, DC: Hirshhorn Museum and Sculpture Garden,  
Smithsonian Institution

Gift of Suzanne Vanderwoude, May 24, 1978



K65

*Bill Boylan Brooklyn Dodgers*

1940 c.

Crayon on paper

30 x 22 cm

11 7/8 x 8 3/4 in.

New York: Private Collection

Courtesy of Allan Stone Gallery



K01

*Buffoon*

1940 c.

Oil on canvas

40,5 x 30,5 cm

16 x 12 in.

New York: Private collection

Courtesy of Allan Stone Gallery



K70

*Jimmy*

1940 c.

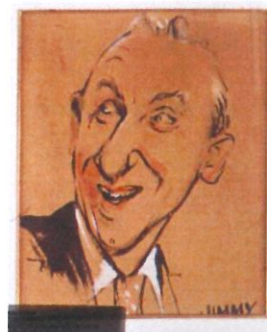
charcoal, ink and gouache on paper

26 x 21,5 cm

10 2/8 x 8 1/2 in.

New York: Private Collection

Courtesy of Allan Stone Gallery



K75

*Kline*

1940 c.

Pencil on paper

28 x 14 cm

11 x 5 1/2 in.

New York: Private Collection

Courtesy of Allan Stone Gallery



K69

*Matt*

1940 c.

Graphite on paper

28,5 x 22 cm

11 1/8 x 8 3/4 in.

New York: Private Collection

Courtesy of Allan Stone Gallery



K78

*Micky the Beer Baron*

1940 c.

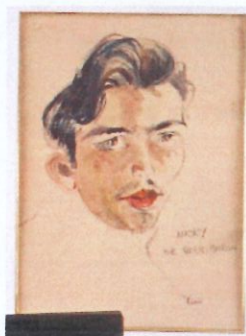
graphite, charcoal, ink and watercolor on paper

30,5 x 23 cm

12 x 9 in.

New York: Private Collection

Courtesy of Allan Stone Gallery



K79

*Our Chef*

1940 c.

pencil on paper

28,5 x 21,5 cm

11 1/4 x 8 1/2 in.

New York: Private Collection

Courtesy of Allan Stone Gallery



K102

*Sammy Bottles*

1940 c.

Graphite on paper

30 x 23 cm

11 3/4 x 9 in.

New York: Private Collection  
Courtesy of Allan Stone Gallery



K04

*Still Life with Puppet*

1940 c.

Oil on canvas

41,3 x 36,2 cm

16 1/4 x 14 1/4 in.

New York: The Metropolitan Museum of Art  
Gift of Theodore J. Edlich, Jr., 1987



K66

*Edna*

1940-42

Pencil on paper

28,5 x 21,5 cm

11 1/4 x 8 1/2 in.

New York: Private Collection  
Courtesy of Allan Stone Gallery



K67

*Grace*

1940-42

Graphite on paper

29 x 21,5 cm

11 1/2 x 8 1/2 in.

New York: Private Collection  
Courtesy of Allan Stone Gallery



K103

*Joe Moon*

1940-42

Pencil and charcoal on paper

30,5 x 23 cm

12 x 9 in.

New York: Private Collection

Courtesy of Allan Stone Gallery



K77

*May Puglia*

1940-42

Graphite, watercolor and gouache on paper

29 x 21,5 cm

11 1/2 x 8 1/2 in.

New York: Private Collection

Courtesy of Allan Stone Gallery



K72

*Mayor LaGuardia*

1940-42

Graphite, gouache and watercolor on paper

24,5 x 22 cm

9 3/4 x 8 3/4 in.

New York: Private Collection

Courtesy of Allan Stone Gallery



K63

*Adeline*

1940s

Charcoal on paper

30 x 22 cm

11 3/4 x 8 3/4 in.

New York: Private Collection

Courtesy of Allan Stone Gallery



K06

*Untitled (to Polly)*

1941

Ink on paper

33,5 x 28 cm

13 1/5 x 11 in.

San Francisco: San Francisco Museum of Modern Art  
Gift of Marjorie Gianelloni



K104

*Locomotive*

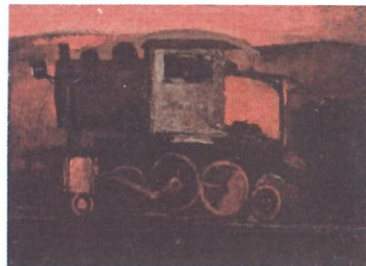
1942

Oil on canvas

63,5 x 82 cm

25 x 32 in.

New York: The Orr Collection



K76

*Pen Drawing*

1942

Ink on paper

15 x 11,5 cm

6 x 4 1/2 in.

New York: Private Collection



K81

*Studio Interior*

1943

Pen on paper

13 x 11,5 cm

5 1/8 x 4 5/8 in.

New York: Private Collection



K80

*Seated Woman Doing Handwork*

1945

Pencil on paper

22,5 x 23,5 cm

8 7/8 x 9 1/4 in.

New York: Private Collection



K64

*Al Smith*

1945 c.

Ink and graphite on paper

25,5 x 22 cm

10 x 8 3/4 in.

New York: Private Collection

Courtesy of Allan Stone Gallery



K68

*Grover Whalen*

1945 c.

Ink and graphite on paper

28,5 x 21,5 cm

11 1/4 x 8 1/2 in.

New York: Private Collection

Courtesy of Allan Stone Gallery



K73

*Grumpy*

1945 c.

Graphite on paper

29 x 19 cm

11 1/2 x 7 1/2 in.

New York: Private Collection

Courtesy of Allan Stone Gallery



K71

Holden Weatherbee

1945 c.

Graphite on paper

28 x 20,5 cm

11 x 8 in.

New York: Private Collection  
Courtesy of Allan Stone Gallery



K100

*Ines*

1945 c.

Pastel on paper

27,5 x 20 cm

10 3/4 x 7 7/8 in.

New York: Private Collection  
Courtesy of Allan Stone Gallery



K101

*John Red*

1945 c.

Graphite and watercolor on paper

29,5 x 22,5 cm

11 5/8 x 8 7/8 in.

New York: Private Collection  
Courtesy of Allan Stone Gallery



K80

*The Fireman*

1945 c.

Graphite on paper

28,5 x 8,5 cm

11 1/4 x 8 1/2 in.

New York: Private Collection  
Courtesy of Allan Stone Gallery



K78

*Untitled*

1945 c.

Ink on paper

22 x 14,5 cm

8 5/8 x 5 5/8 in.

New York: Private Collection



K08

*Woman in a Rocker*

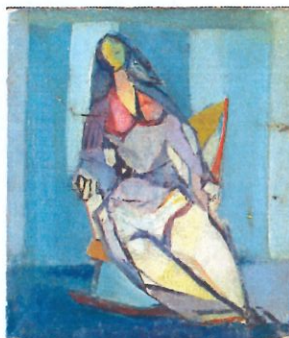
1945 c.

Oil on canvas

41 x 35.6 cm

16 1/8 x 14 in.

New York: The Metropolitan Museum of Art  
Gift of Rufus F. Zogbaum, 1998



K79

*Interior with Woman and Cat*

1945-46 c.

Brush and ink on paper

8,5 x 6,5 cm

3 3/8 x 2 5/8 in.

New York: Private Collection



K09

*Self Portrait*

1945-47

Oil on board

23,5 x 19 cm

9 1/4 x 7 1/2 in.

New York: Private Collection  
Courtesy of Allan Stone Gallery, New York



K02

*Elizabeth*

1946

Ink and watercolor on paper

20,5 x 12,5 cm

8 x 5 in.

New York: The Orr Collection



K89

*Untitled*

1946

Pen ink on paper

25 x 17,5 cm

9 3/4 x 6 7/8 in.

New York: Private Collection



K83

*Untitled*

1946 c.

Brush and ink on paper

21,5 x 30 cm

8 1/2 x 11 3/4 in.

New York: Private Collection



K11

*'47 series no. 4*

1947

Oil and ink on paper

56 x 71 cm

22 x 28 in.

New York: Private Collection

Courtesy of Allan Stone Gallery, New York



K05

*Seated Figure*

1947 c.

Ink and crayon on paper

21,5 x 17 cm

8 1/2 x 6 3/4 in.

New York: The Orr Collection



K10

*Rocking Chair (Elizabeth)*

1948

Brush, ink on paper

15 x 12,5 cm

6 x 5 in.

New York: The Orr Collection



K12

*Untitled*

1948

Brush and ink on paper

58,5 x 76 cm

23 x 30 in.

Washington, DC: Hirshhorn Museum and Sculpture Garden,  
Smithsonian Institution

Gift of Joseph H. Hirshhorn, 1966



K13

*Untitled*

1948

Oil and paper collage mounted on canvas

58,5 x 76 cm

23 1/8 x 30 in.

Washington, DC: Hirshhorn Museum and Sculpture Garden,  
Smithsonian Institution

Gift of Joseph H. Hirshhorn, 1966



K57

*Untitled*

1948

Oil on canvas mounted on masonite

97 x 75 cm

38 3/16 x 29 1/2 in.

New York: Solomon R. Guggenheim Museum

Gift Alexander Abraham, 1979



K16

*Untitled*

1949

Oil on paper

21,5 x 18 cm

8 1/2 x 7 in.

New York: Private Collection

Courtesy of Allan Stone Gallery, New York



K17

*Untitled*

1949

Brush and ink on paper

21,5 x 19,5 cm

8 1/2 x 7 3/4 in.

Washington, DC: Hirshhorn Museum and Sculpture Garden,  
Smithsonian Institution

Gift of Joseph H. Hirshhorn, 1966



K18

*Untitled*

1950

Oil on Canvas

28 x 21,5 cm

11 x 8 1/2 in.

New York: Private Collection

Courtesy of Allan Stone Gallery, New York



K19

*Untitled*

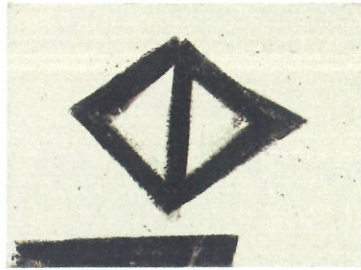
1950

Oil on canvas

45,5 x 63,5 cm

18 x 25 in.

New York: Marsha and Jeffrey Perelman Collection



K58

*Untitled*

1950-51

Oil and collage on telephone paper

26 x 22,5 cm

10 3/4 x 8 7/8 in.

New York: Private Collection

Courtesy of Allan Stone Gallery, New York



K84

*Black and White*

1951

Ink on paper on board

28 x 21 cm

11 x 8 3/8 in.

New York: Private Collection



K20

*Untitled*

1951

Oil on canvas

160 x 170 cm

71 x 78 in.

New York: Private Collection

Courtesy of Allan Stone Gallery, New York



K21

*Horizontal II*

1952

Oil on Canvas

195 x 254 cm

77 x 100 in.

Chicago: The Art Institute of Chicago  
Bequest of Sigmund E. Edelstone



K22

*Study for High Street*

1952

Oil on paper

23 x 27,5 cm

9 x 10 7/8 in.

New York: Private Collection  
Courtesy of Allan Stone Gallery, New York



K23

*Untitled (diptych)*

1952

Oil on paper

51,5 x 21,5 cm

21 1/2 x 12 3/8 in.

New York: Private Collection  
Courtesy of Allan Stone Gallery, New York



K24

*Untitled*

1952 ca.

Ink on telephone book paper

27,5 x 23 cm

10 3/4 x 9 in.

New York: Private Collection  
Courtesy McKee Gallery



K25

*Black & White*

1953

Oil on paper

27,5 x 21 cm

10 3/4 x 8 1/4 in.

New York: Private Collection

Courtesy of Allan Stone Gallery, New York



K62

*Buried Reds*

1953

Oil on Board

53,5 x 38 cm

21 x 15 in.

Los Angeles: Frederick Weisman Art Foundation



K74

*Composition*

1953

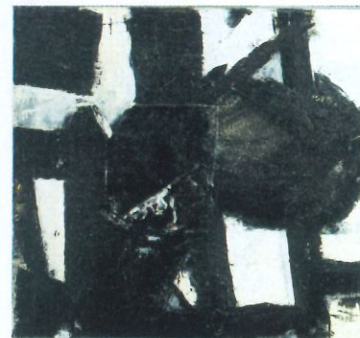
Oil on canvas

73,5 x 78,5 cm

29 x 31 in.

Hartford: Wadsworth Atheneum

Gift of Mr. and Mrs. Walter K. Gutman, 1955



K28

*Herald*

1953

Oil on canvas

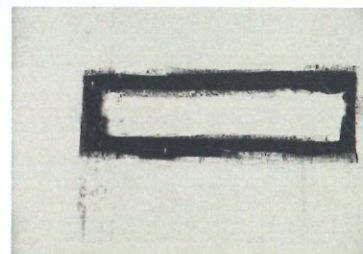
146 x 209 cm

57 1/2 x 82 1/4 in.

New York:

Private Collection

Courtesy of Allan Stone Gallery, New York



K26

*Tower*

1953

Oil on canvas

206 x 132 cm

81 1/8 x 52 in.

Los Angeles: The Museum of Contemporary Art  
The Panza Collection



K27

*Untitled*

1953

India ink and oil on paper

27,5 x 35 cm

10 7/8 x 13 7/8 in.

New York: Solomon R. Guggenheim Museum  
Gift Janet C. Hauck in loving memory of Alicia Guggenheim  
and Fred Hauck, 1992



K30

*Accent Grave*

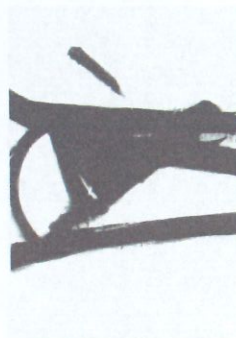
1955

Oil on Canvas

191 x 131,5 cm

75 1/5 x 51 4/5 in.

Cleveland: Cleveland Museum of Art  
Anonymous gift



K31

*Untitled*

1955

Ink on paper mounted on board

28 x 34,5 cm

11 x 13 5/8 in.

New York: Private collection  
Courtesy of Allan Stone Gallery



K32

*Vawdavitch*

1955

Oil on canvas

158,5 x 205 cm  
62 1/3 x 80 5/8 in.

Chicago: The Museum of Contemporary Art  
Gift of Claire B. Zeisler



K73

*The Bridge*

1955 c.

Oil on canvas

203 x 134 cm  
80 x 52 3/4 in.

Utica, NY: Munson-Williams-Proctor Institute, Museum of Art



K34

*Untitled*

1955 c.

Oil and gouache on cardboard

77 x 44 cm  
30 1/4 x 17 1/4 in.

San Francisco: San Francisco Museum of Modern Art  
Anonymous gift



K33

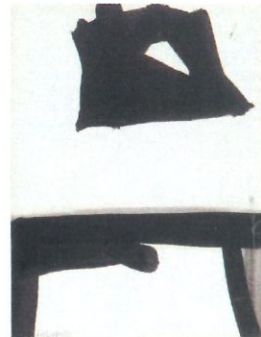
*Untitled*

1955 c.

Ink on paper

28 x 21,5 cm  
11 x 8 1/2 in.

New York: Private Collection  
Courtesy McKee Gallery



K35

*Monitor*

1956

Oil on canvas

200 x 294 cm

78 3/4 x 115 3/4 in.

Los Angeles: The Museum of Contemporary Art  
The Panza Collection



K36

*Sabro*

1956

Oil on Canvas

202 x 120,5 cm

78 3/4 x 47 1/2 in.

Lisboa: Coleção Berardo - Sintra Museum of Modern Art



K37

*Untitled*

1956

Ink on paper

26,5 x 21,5 cm

10 1/2 x 8 1/2 in.

New York: Private Collection  
Courtesy of Allan Stone Gallery, New York



K90

*Untitled*

1956 c.

Ink on paper

23 x 21,5 cm

9 x 8 1/2 in.

New York: Private Collection



K87

*Study for Green Cross*

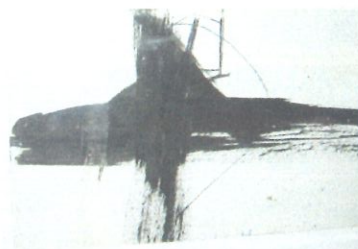
1956 c.

Brush, pen and ink on paper

16,5 x 26 cm

6 1/2 x 10 1/4 in.

New York: Private Collection



K95

*Study for "Siegfried"*

1957

Ink and gouache on paper

30,5 x 26,5 cm

12 x 10 1/2 in.

Scottsdale: Private Collection

Courtesy Pascal de Sarthe Fine Art



K38

*Untitled*

1957

Oil on Canvas

165 x 99 cm

65 x 39 1/4 in.

New York: Private Collection



K39

*Untitled*

1957

Oil on Paper

43 x 55,5 cm

17 x 22 in.

Washington, DC: Hirshhorn Museum and Sculpture Garden,  
Smithsonian Institution

Gift of Joseph H. Hirshhorn, 1966



K40

*Untitled*

1957

Oil and ink on paper

33,5 x 26,5 cm

13 1/4 x 10 3/8 in.

New York: Private Collection

Courtesy of Allan Stone Gallery, New York



K41

*Untitled*

1957

Oil and collage on paper

28 x 21,5 cm

11 x 8 1/2 in.

New York: Private Collection

Courtesy of Allan Stone Gallery, New York



K42

*Untitled*

1957

Oil and collage on paper

33 x 25,5 cm

13 x 10 in.

New York: Private Collection

Courtesy of Allan Stone Gallery, New York



K43

*Untitled*

1957

Oil on canvas

183 x 142 cm

72 x 56 in.

New York: Collection of Mr. & Mrs. Frank Barsalona



K44

*Siegfried*

1958

Oil on canvas

261,5 x 205,5 cm

103 x 81 in.

Pittsburgh: Carnegie Museum of Art  
Gift of the Friends of the Museum, 1959



K45

*Black Reflections*

1959

Oil and pasted paper on paper, mounted on Masonite

48,3 x 49,2 cm

19 x 19 3/8 in.

New York: The Metropolitan Museum of Art  
Gift of Mr. and Mrs. Norman Schneider, 1964



K59

*Provincetown II*

1959

Oil on canvas

237 x 205.5 cm

93 1/4 x 81 in.

San Francisco: Collection of Thomas W. Weisel & Emily  
Carroll



K46

*Untitled*

1959

Oil on paper

18 x 19 cm

7 x 7 1/2 in.

New York: Private Collection  
Courtesy of Allan Stone Gallery, New York



K47

*Untitled*

1959

Oil on canvas

70 x 95 cm

27 1/2 x 37 1/2 in.

New York: Private Collection

Courtesy of Allan Stone Gallery, New York



K48

*Black and White no.2*

1960

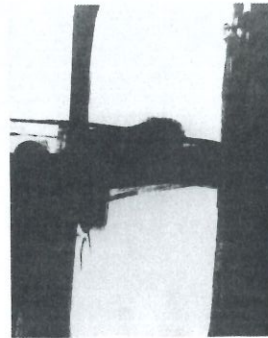
Oil on canvas

227,5 x 154,5 cm

89 1/2 x 60 3/4 in.

Austin, TX: The Jack S. Blanton Museum of Art,  
The University of Texas

Gift of Mari and James A. Michener, 1991



K93

*Diamond*

1960

Oil on canvas

164 x 201,5 cm

64 1/2 x 79 1/4 in.

Scottsdale: Private Collection

Courtesy Pascal de Sarthe Fine Art



K94

*Turin*

1960

Oil on canvas

203 x 241,5 cm

80 x 95 in.

Kansas City: The Nelson-Atkins Museum of Art

Gift of Mrs. Alfred B. Clark through the Friends of Art



K49

*Untitled*

1960

Oil on panel

30,5 x 40,5 cm

12 x 16 in.

New York: Private Collection

Courtesy of Allan Stone Gallery, New York



K50

*Untitled*

1960

Oil on paper

21,5 x 27 cm

8 3/8 x 10 5/8 in.

New York: Private Collection

Courtesy of Allan Stone Gallery, New York



K85

*Study for "Carnival"*

1960 c.

ink on paper

20 x 23 cm

10 7/8 x 9 in.

New York: Private Collection



K51

*Meryon*

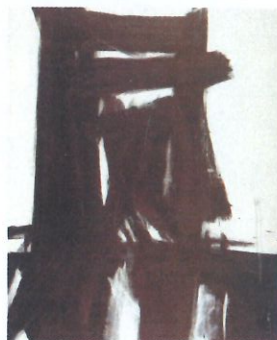
1960-61

Oil on canvas

236 x 199,5 cm

92 7/8 x 77 in.

London: Tate Gallery



K52

*Nesquahoning I*

1960-61

Oil on canvas

71 x 101,5 cm

28 x 40 in.

San Francisco: Private Collection



K86

*Untitled*

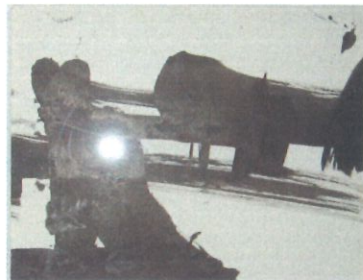
1960-61 c.

brush and ink on paper

20,5 x 26,5 cm

8 x 10 3/8 in.

New York: Private Collection



K53

*Black Iris*

1961

Oil on canvas

275 x 202 cm

108 1/4 x 79 1/2 in.

Los Angeles: The Museum of Contemporary Art  
The Panza Collection



K54

*Slate Cross*

1961

Oil on Canvas

282,5 x 201,5 cm

111 1/4 x 79 1/4 in.

Dallas: The Dallas Museum of Art  
Gift of Mr. and Mrs. Algur H. Meadows and the Meadows  
Foundation Incorporated



K55

*Study for "Flanders"*

1961

Brush and ink, and oil on paper

23 x 18 cm

9 x 7-1/8 in.

New York: The Metropolitan Museum of Art  
Gift of Renée and David McKee, 1984



K56

*Tragedy*

1961

Oil on board

76 x 101,5 cm

30 x 40 in.

Baltimore: Baltimore Museum of Art  
Gift of Dr. and Mrs. Winston H. Price, Baltimore  
BMA 1964.19



K82

*Study for "Zinc Door"*

1961 c.

ink on paper

27,5 x 22,5 cm

10 3/4 x 8 7/8 in.

New York: Private Collection

